



**Community Energy South (CES) is an umbrella organisation for community energy groups across Sussex and Kent that will soon include Hampshire, Surrey and South London.**

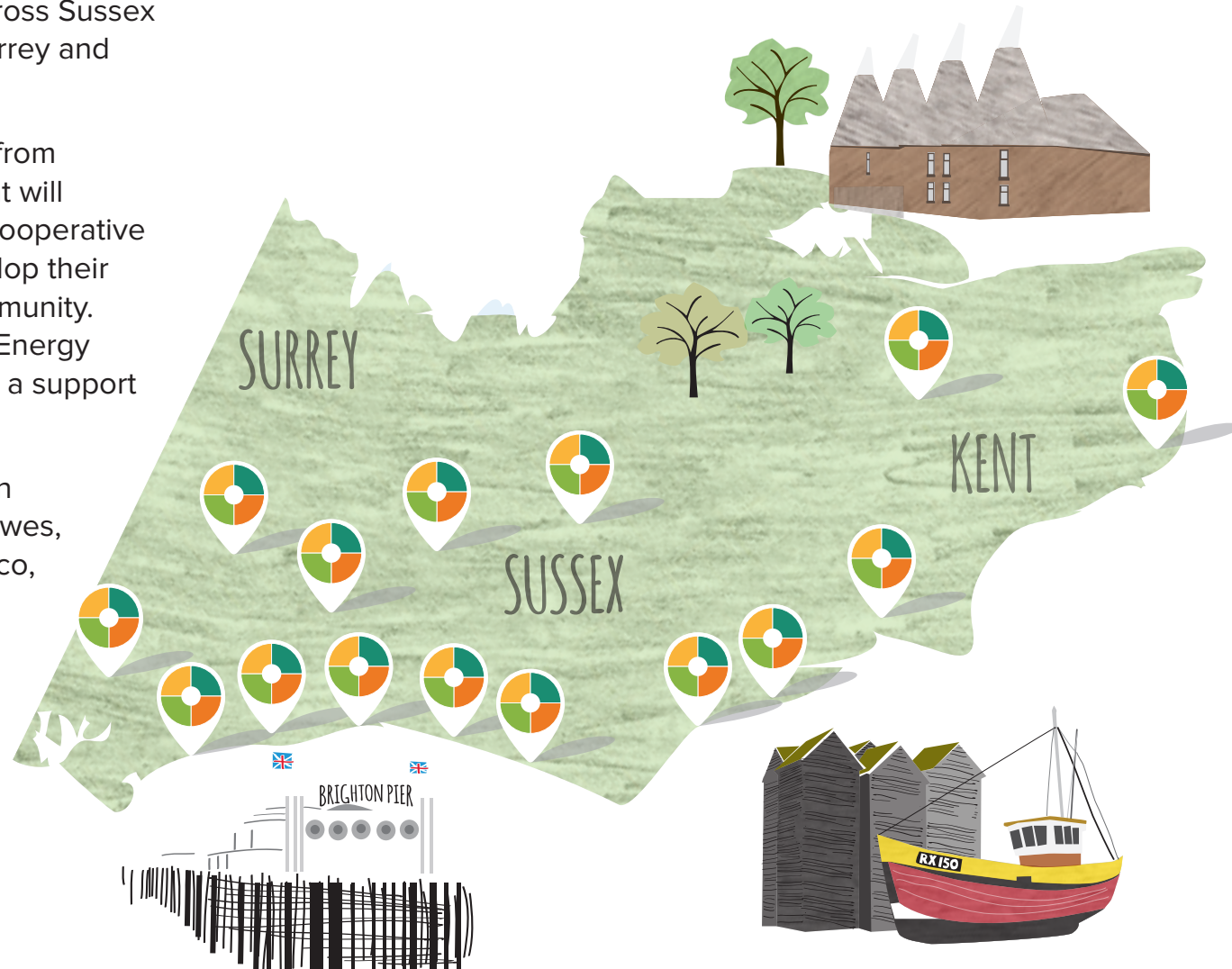


# Community Energy South: Who are we?

Community Energy South (CES) is an umbrella organisation for community energy groups across Sussex and Kent that will soon include Hampshire, Surrey and South London.

We currently have 15 member energy groups from Chichester to Deal. We are a Ltd Company that will become a Charity. Each group is set up as a Cooperative and has a board of directors that help to develop their own Community Energy practice for their community. Each group works in both Energy Saving and Energy Generation. Community Energy South acts as a support mechanism and a voice for the groups.

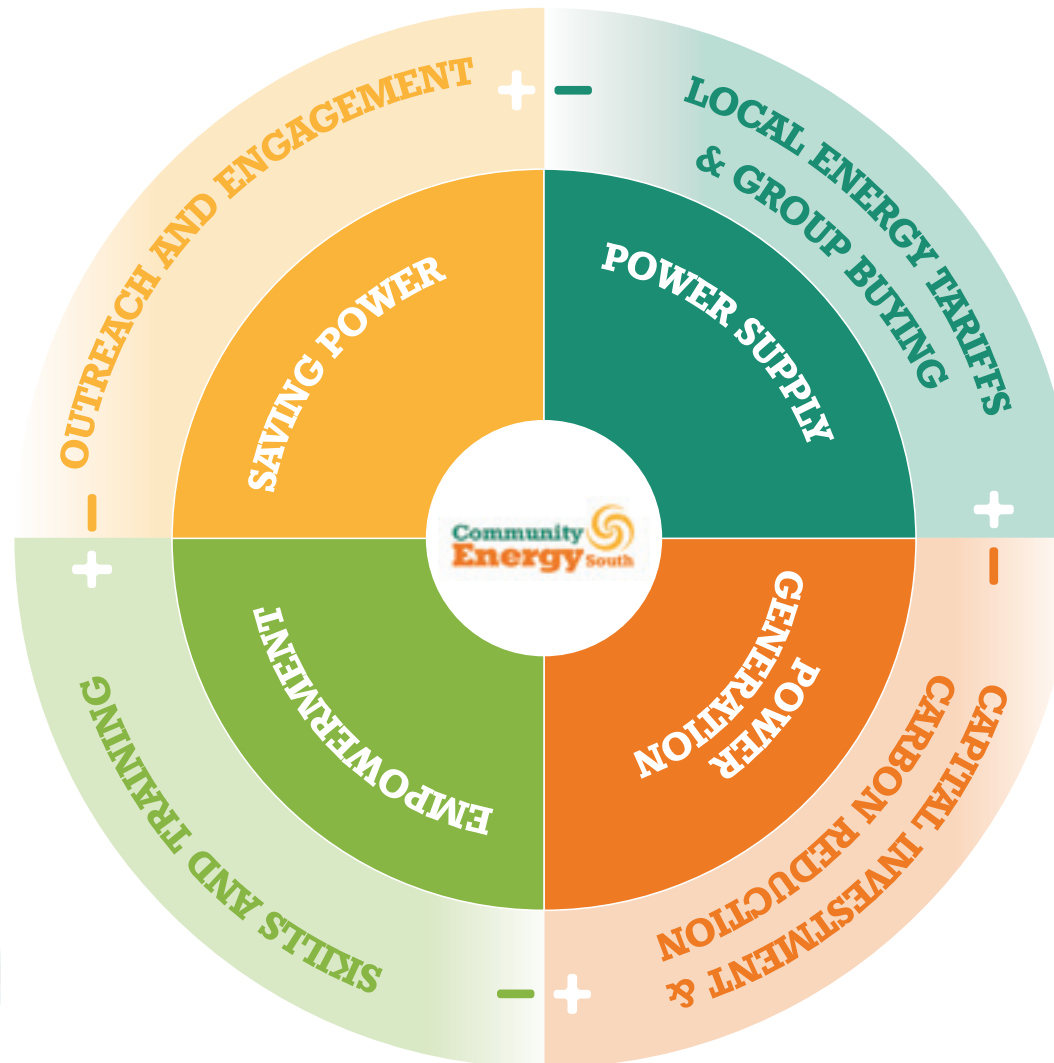
Current Directors are the founders of their own community energy enterprises in Worthing, Lewes, Barcombe, Brighton, Hastings and Kent: Ovesco, BHesco, Energise Sussex Coast, Barcombe Energy Group, Worthing Community Energy and Sustainability Connections.



# Our strategy



BRINGING  
LOCAL POWER



TO OUR  
COMMUNITIES





# Power supply: Our tariff strategy

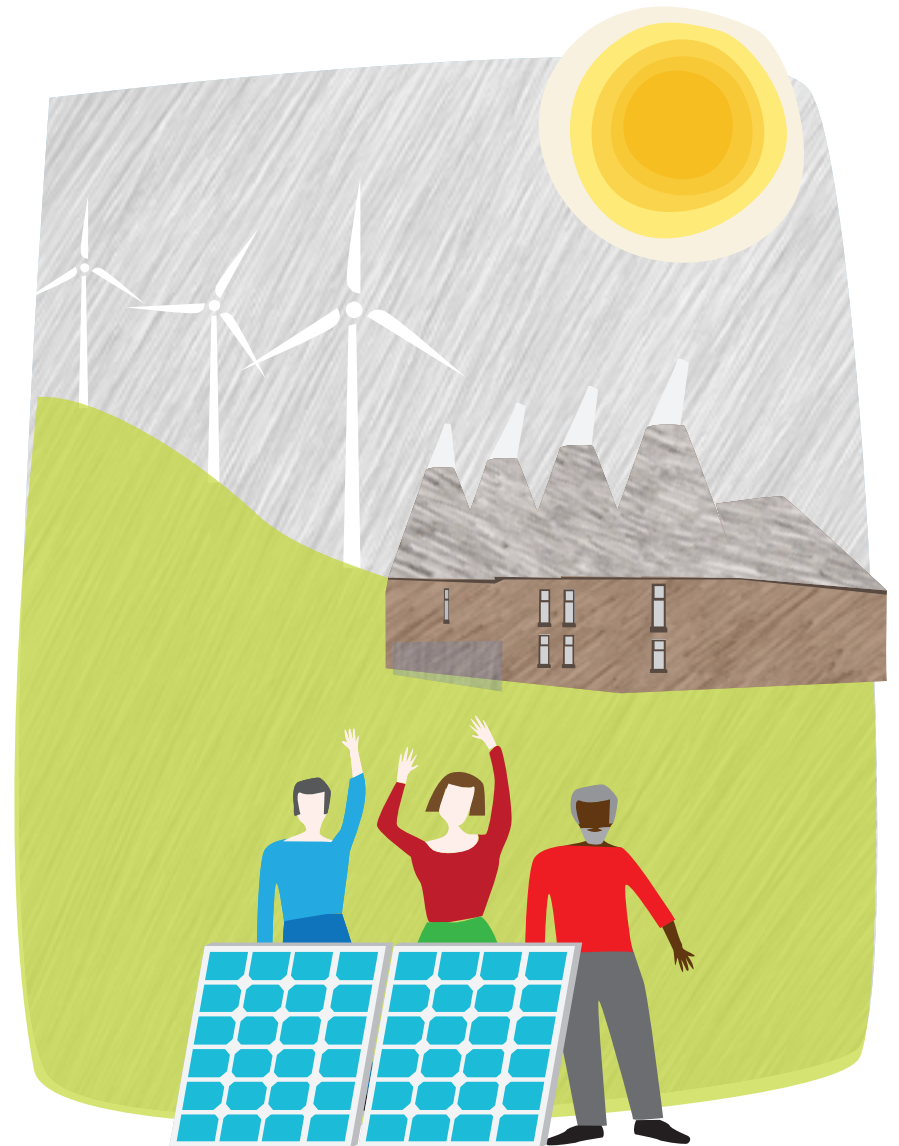
CES seeks to look for Energy Supply partners to introduce our three local community energy tariffs including a Fixed pay monthly tariff.

The service would be named the Community Energy South tariff:

- A 100% renewable energy tariff
- Fixed energy tariff - 30 or 50% renewable
- A fairer PAYG tariff for prepayment meter customers

The tariffs will be supported over time by local renewable energy projects developed by our members. Our energy company partners will have opportunities to purchase our collected generation capacity.

The referral fee that CES earns from switching residents to the Community Energy Tariff will provide a steady cash flow that will build our local service for local people. We want our communities to be able to bring their bills to us and we help them face to face.



# Who are our customers?

There are approximately 600,000 households in Sussex and 500,000 households in Kent.

Our Community Energy Network has close working relationships with other voluntary organisations, local authorities and social housing providers who would all support and promote a community energy tariff.

This would be popular and self-sustaining due to:

- The public trust that community groups enjoy and the appeal of community owned, decentralized energy generation
- CES being able to offer a consistent local energy service regardless of political change
- CES being closely linked to local groups, including neighbourhood planning groups and community and voluntary sector groups.

67% of people would like to see the energy industry re-nationalised. Community energy represents a step towards this aim.



# What is special about Community Energy South?

Since CES was formed we have jointly contributed more than 12,000 volunteer hours to setting up local support networks and delivering energy services to our communities.

Together the CES network of community energy groups numbers over 5,000 local people.

Since 2013 CES members have delivered the Department of Energy and Climate Change (DECC) Big Energy Saving Network (BESN) scheme.

In 2014/2015 fifteen CES community energy champions were trained to provide energy saving and tariff switching advice and we directly helped over 2000 residents with their energy bills and trained over 650 frontline workers.

We estimate that we saved the region £375,000 on energy.

As a result of the Cabinet Office's 2014/2015 Community Energy Peer Mentoring Project we have mentored the growth of 12 new Community Energy Groups all registered as Community benefit Societies - in 2016 we projecting 20MW's of energy generation across these groups.



# Our contact

**Power Supply** Kayla Ente  
**07786 507818**

**Saving Power** Richard Watson  
**07854 951325**

**Power Generation** Chris Rowland  
**07799 515289**

**Community Energy Training** Stephanie Karpetas  
**07850 131042**

**Business Development** Ollie Pendered  
**07870 689978**

## Contact

**01273 472405**

[ces@ovesco.co.uk](mailto:ces@ovesco.co.uk)

[www.communityenergysouth.org.uk](http://www.communityenergysouth.org.uk)



Community Energy South Limited is a company limited by guarantee incorporated in England and Wales number 09249252. Registered office: 2 Station Street, Lewes BN7 2DA